



The ASIAN SOCIO-CULTURAL CONTEXT: A Case Study of Renal Disease Care

by
PROSPERIDAD LUIS

and
**SHINA SAMOZA
SAMUEL AGUIRRE
MARIEL CAGUINGIN**

The 6th WORLD CONGRESS ON DESIGN AND HEALTH
June 24 – 28, 2009
Ritz Carlton Millenia
Singapore

ESRD: End-Stage Renal Disease



Attached to the machine for 3-4 hours, 3-4 times a week
Dialysis Center is a "second home"



Dialysis Center



THE NKTI DIALYSIS CENTER



Design Perspective



A Modern facility - the new Dialysis Center and Doctor's Clinics

Photograph

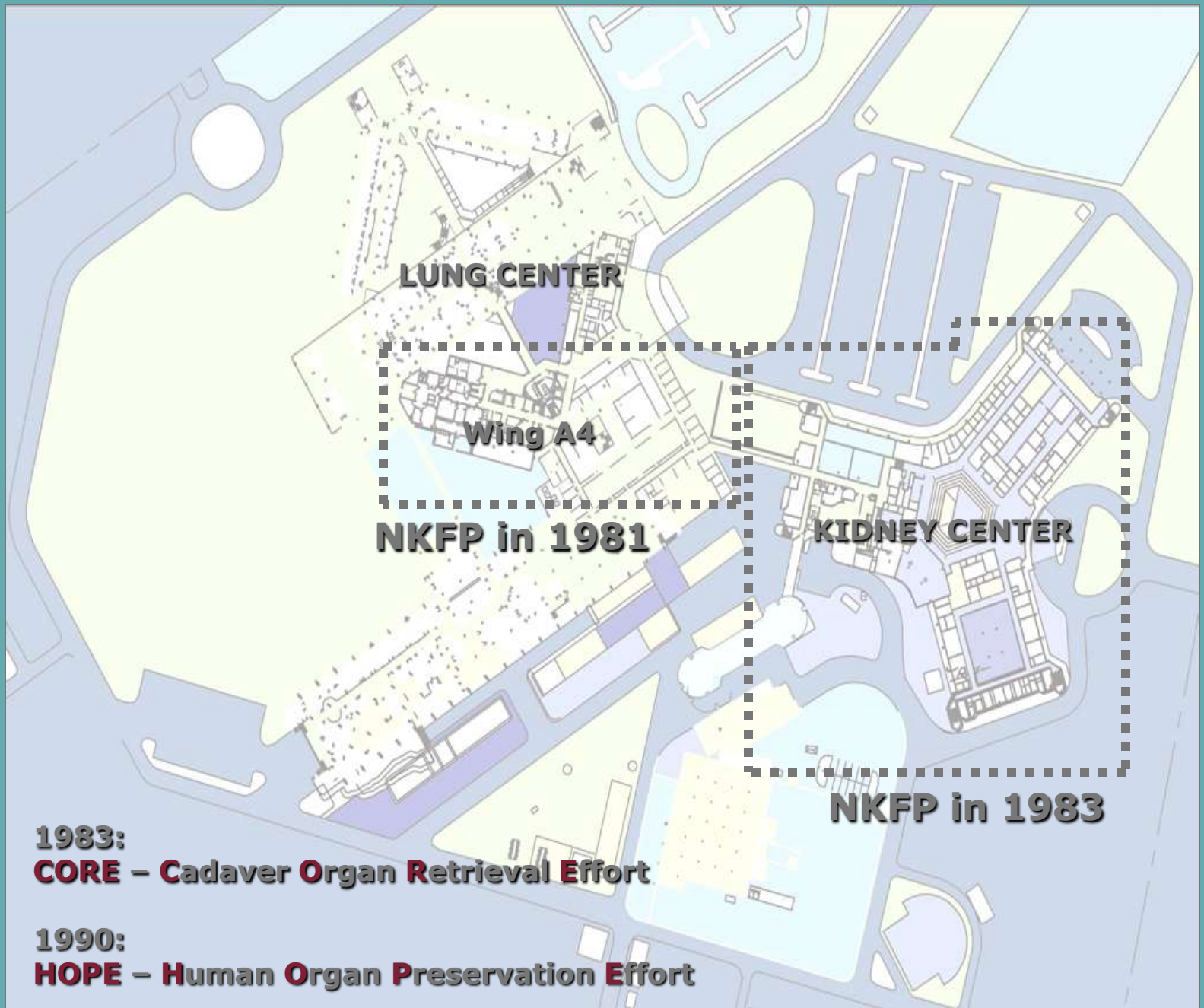
-
- ❖ **TO DETERMINE THE EFFECT OF THE PRESENCE OF EXTENDED FAMILY ON THE ALLOCATION OF SPACES;**
 - ❖ **TO DETERMINE THE BEST ARRANGEMENT OF DIALYSIS STATIONS, CONSIDERING THE APPARENT “KAPITBAHAYAN” RELATIONSHIP CREATED AMONG PATIENTS WHO SEE EACH OTHER ON A REGULAR BASIS;**
 - ❖ **TO VALIDATE AND CONFIRM THE AMENITIES NECESSARY TO CREATE A “SECOND HOME” FOR PATIENTS, USING THE EXISTING FACILITY AND ITS PATIENTS AS SOURCE OF INFORMATION;**
 - ❖ **TO GATHER INFORMATION FROM PATIENTS AND THEIR FAMILIES ABOUT FEELINGS AND THOUGHTS, HOPE AND DESPAIR, WITH REGARDS TO ESRD, TO ASSIST IN THE DESIGN OF THE EXPANSION FACILITY**

-
- ❖ **THE REACTION OF PATIENTS TO SELECTED FEATURES MEANT BY DESIGN FOR THEIR WELL-BEING;**
 - ❖ **OTHER FINDINGS OF THE STUDY AND HOW THEY WILL BE INTEGRATED IN THE DESIGN OF THE NEW EXPANSION FACILITY;**
 - ❖ **HOW THE HOSPITAL HAD ENHANCED THE IMAGE OF GOVERNMENT SUPPORT FOR HEALTHCARE;**
 - ❖ **HOW THOUGHTFUL DESIGN, WELL-IMPLEMENTED CONSTRUCTION AND BOLD, PROGRESSIVE PROJECT MANAGEMENT CAN CREATE RIPPLES TOWARDS CHANGE.**

PCSH: Philippine Centers for Specialized Healthcerc



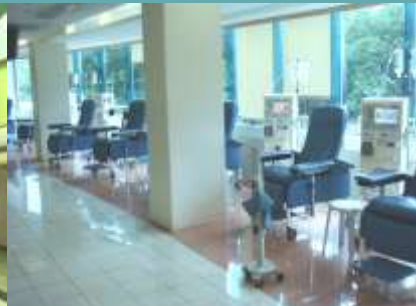
NKFP: National Kidney Foundation of the Philippines



1983:
CORE – Cadaver Organ Retrieval Effort

1990:
HOPE – Human Organ Preservation Effort

NKTI: National Kidney and Transplant Institute of the Philippines

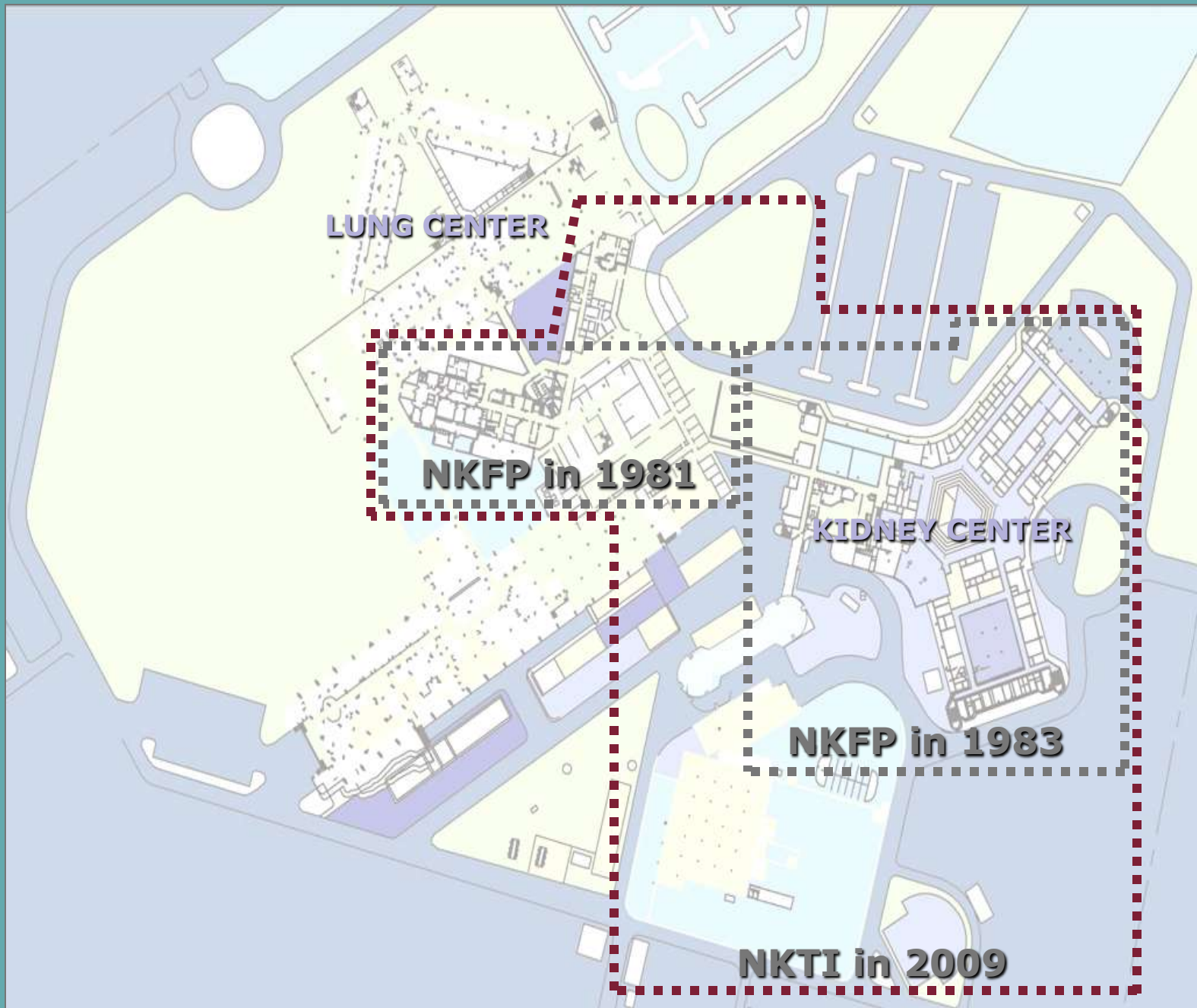


- ❖ **3-fold Mission: Service, Training and Research for the benefit of Filipinos afflicted with kidney and allied diseases.**
- ❖ **The only government hospital specializing in renal diseases and organ transplantation –**
- ❖ **credited with many “firsts” in the Philippines:**

**first kidney living-related donor transplant;
first kidney and pancreas double transplant;
first liver transplant;
first bone marrow transplant; and**

first combined kidney and liver transplant in Asia

**NKFP: National Kidney Foundation
of the Philippines**



The NKTII Dialysis Center Build-Operate-Transfer Scheme



Signing of Memorandum of Agreement between NKTII and international equipment vendor

- ❖ sharing of capital investments
- ❖ sharing of expenses
- ❖ sharing of profits

- ❖ turn-over / transfer of equipment ownership and full operation to NKTII

- ❖ an example of private sector-government partnership

NKF celebrates its 40th anniversary in 2009



Map of the Location of the 24 NKF Dialysis Centers

Objectives of NKF:

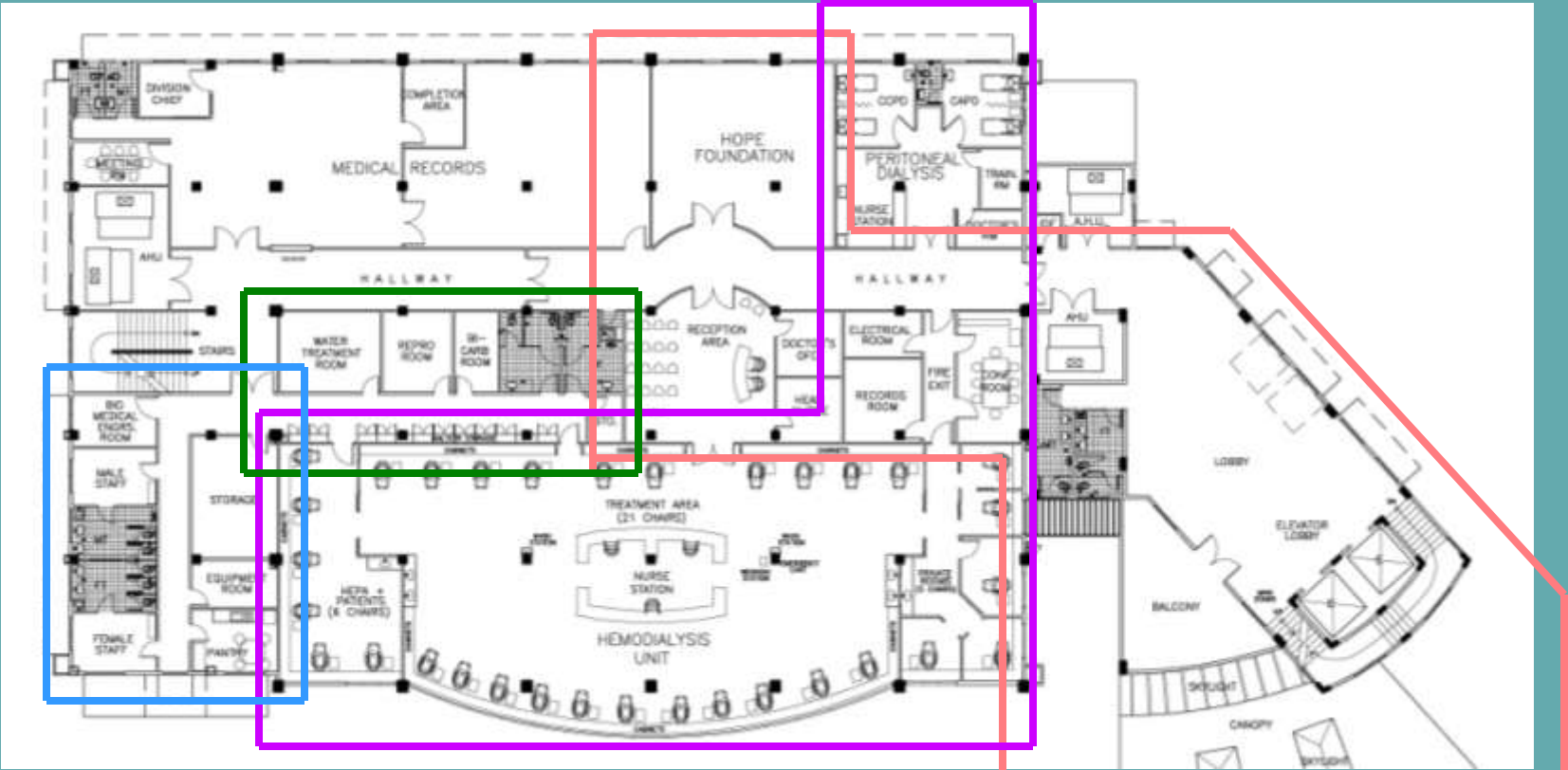
- ❖ to save lives of kidney failure patients
- ❖ to encourage and promote research in all aspects of kidney disease
- ❖ to carry out public education programs on kidney diseases

Interiors of NKF Dialysis Centers



NKTI: Design of the New Expanded Dialysis Center

SERVICE AREA PUBLIC AREA



STAFF AREA

PATIENT AREA



CASE STUDY – to focus on the patient and the family grappling for an extended time with renal disease.

FACILITY –

The existing Dialysis Center of NKTl

SUBJECT –

The current patients and their families

BASIC INSTRUMENT FOR DATA GATHERING

Interview Questionnaire

Types

- ❖ **Open-ended question**
- ❖ **Closed or fixed alternative question**

Formats used

- ❖ **Information format**
- ❖ **Simple “yes” or “no” format**
- ❖ **Forced choice format**
- ❖ **Ranking format**

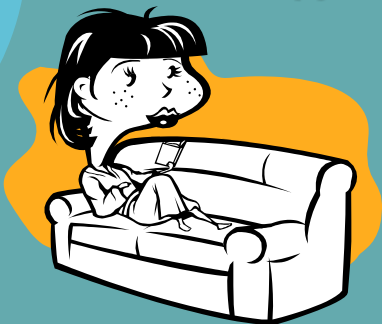
-
- ❖ **PERSONAL INFORMATION ON PATIENT**
 - ❖ **INFORMATION ON PATIENTS' DIALYSIS TREATMENT**
 - ❖ **INFORMATION ON COMPANION AND ROLE**
 - ❖ **RELATIONSHIP WITH OTHER PATIENTS**
 - ❖ **ACTIVITIES DURING DIALYSIS TREATMENT**
 - ❖ **PERCEPTION OF THE ENVIRONMENT AND DESIGN**

THERE ARE SOCIO-CULTURAL ASPECTS IN THE PHILIPPINE SETTING AND IN THE ASIAN SETTING THAT MUST FORM PART OF THE CONSIDERATIONS FOR DESIGN OF THE HOSPITAL

CLOSELY-KNIT FAMILY

The patient is always with family in the hospital

The "bantay" –
daytime
(distant relation,
household help)



The sleep-over bed



(sofa bed)

The "bantay" –
at night
(close relation, spouse,
child, parent)



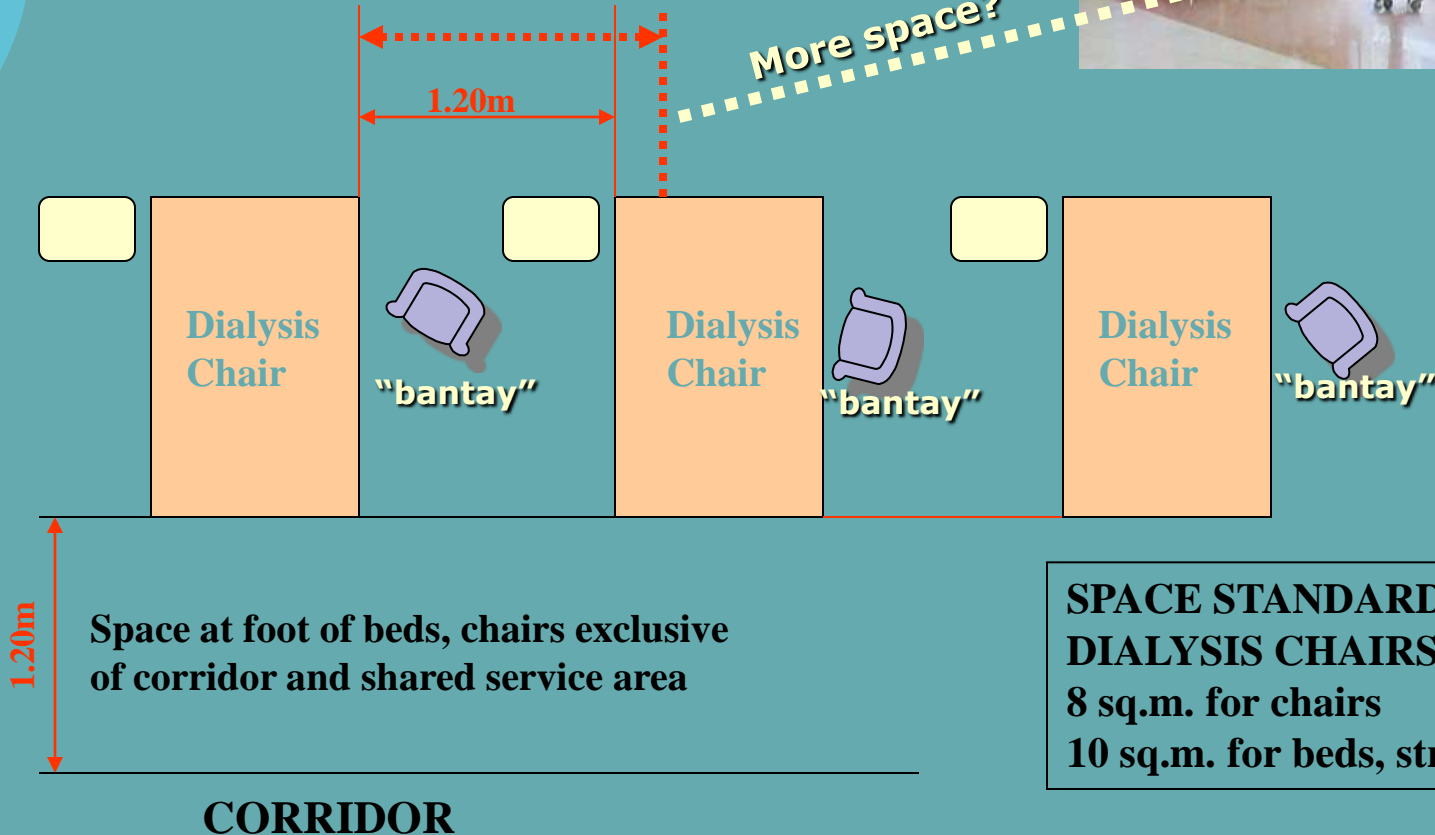
(foldable floor bed)

THE "BANTAY" IN THE DIALYSIS CENTER

- ❖ a constant companion and friend
- ❖ gives feeling of security and psychological comfort
- ❖ caregiver



More space?



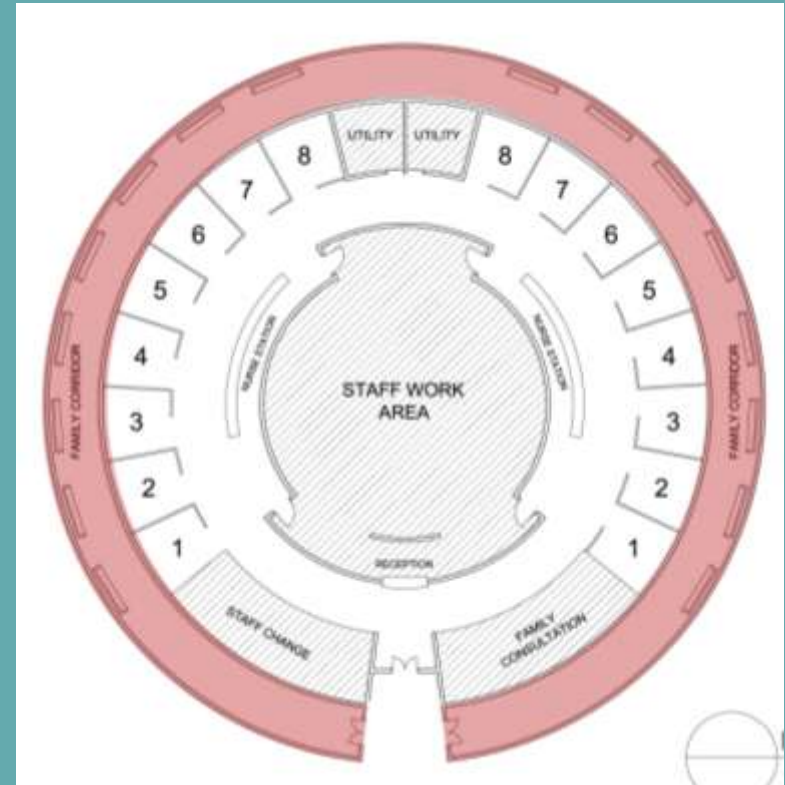
CLOSELY-KNIT FAMILY

The patient is always with family in the hospital

The peripheral family corridor of ICUs



Philippine Heart Center



Makati Medical Center

THE PERIPHERAL CORRIDOR IN THE DIALYSIS CENTER



National Kidney & Transplant Institute

CLOSELY-KNIT COMMUNITY "Kapitbahayan"



"Kapitbahayan" – "you are my dear neighbor"

"Bayanihan" – spirit of cooperation

“KAPITBAHAYAN” IN THE DIALYSIS CENTER

A new meaning for:

“CLASSMATE”

“GRADUATE”

“REPEATER”

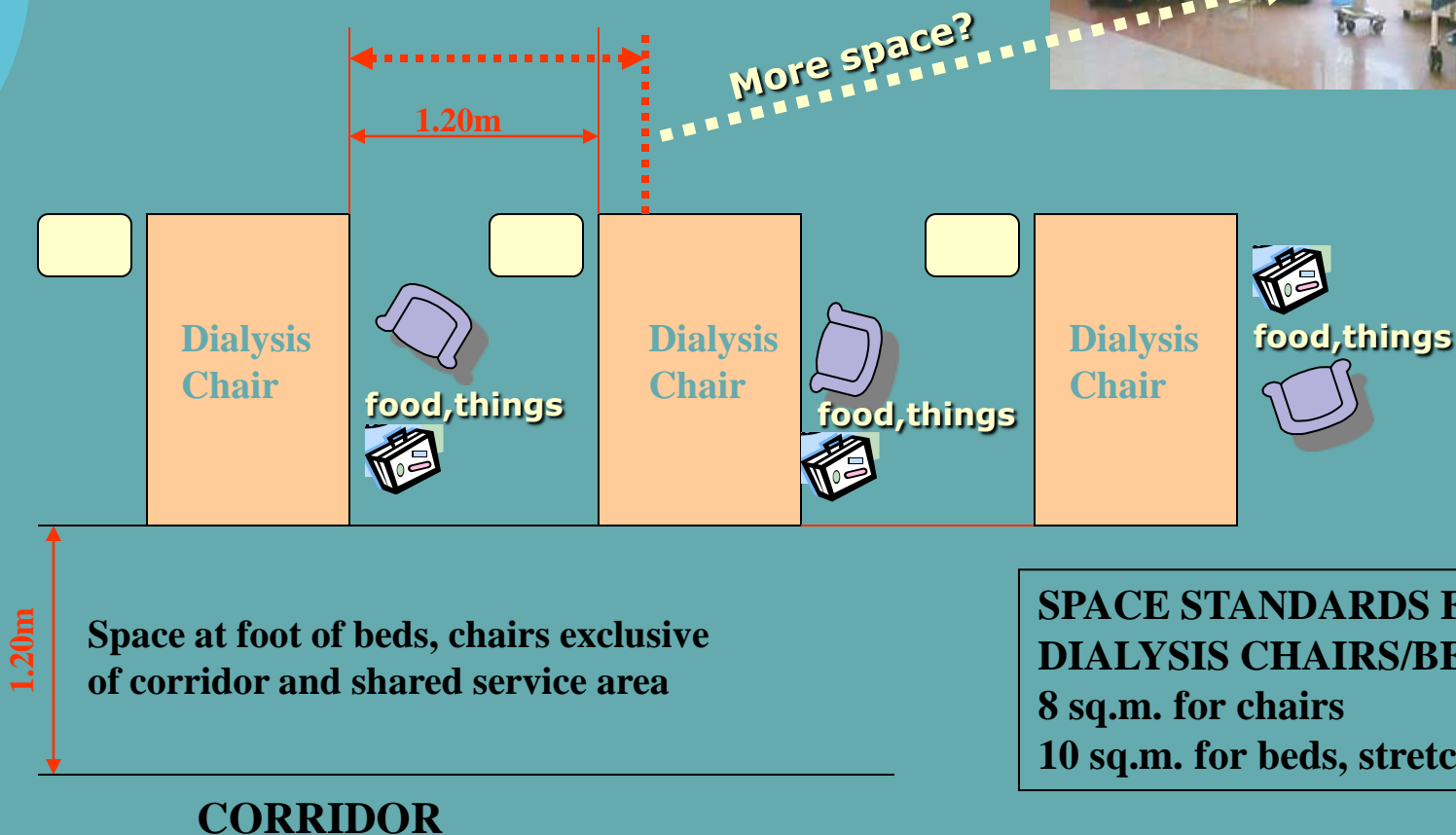


Waiting Area – the “classroom”

FOOD IS AT THE HEART OF LIVING



FOOD AT THE DIALYSIS CENTER



SPACE STANDARDS FOR DIALYSIS CHAIRS/BEDS
8 sq.m. for chairs
10 sq.m. for beds, stretchers

EVERYTHING IS A CELEBRATION!

"Fiesta Kahit Kelan!"



**At the elevator lobby
And other public areas**

Inside patients' rooms



FAITH IN FATE

"Me awa ang Diyos."



CLOSING STATEMENT

**THE STUDY REVEALED DESIGN CONSIDERATIONS THAT CAN BE APPLIED TO THE DESIGN OF THE NEW EXPANSION FACILITY, WITH FOCUS ON NEEDS, REQUIREMENTS AND PREFERENCES OF THE MOST IMPORTANT USER OF THE FACILITY –
THE PATIENT**

THE DESIGNERS THRU THIS STUDY ALSO HAD THE OPPORTUNITY TO ASSESS THE VALIDITY OF THE DESIGN INTENTIONS FORMULATED ALMOST A DECADE AGO

PASASALAMAT

**MARAMI PONG SALAMAT
SA INYONG PANAHO!**